



# Media Release

Date: 17<sup>th</sup> September, 2024

**EMBARGOED UNTIL: 12:01 AM, WEDNESDAY SEPTEMBER 18.** Reference: 1-24

## MARULAN QUARRY APPLICATION SET FOR SUBMISSION LATE THIS YEAR

Global Quarries Australia is set to submit its development application for a quarry near Winfarthing Road, Marulan later this year after addressing changes in Government guidelines and other unforeseen delays.

The quarry aims to extract up to 500,000 tonnes of hard rock aggregate each year for around 18 years and is estimated to generate \$20Million annually in wages and contracts for the local community.

Project Manager Vergilio Serra said the quarry proposal first announced in April 2019 faced significant delays caused by COVID 19, complex Crown Lands negotiations, changing guidelines for haulage vehicle movements and other factors that meant meeting updated Environmental Assessment Requirements for submission to the NSW Department of Planning and Environment.

“The updated requirements are largely in line with previous guidelines, but the biggest change is safety guidance from Transport for NSW (TfNSW) that requires Winfarthing Road in Marulan to be used for haulage trucks exiting the proposed quarry,” he said.

Former advice supported Global Quarries Australia’s design for ingress and egress merge lanes directly connecting the Hume Highway and the quarry, and avoiding Winfarthing Road, but a review carried out by the transport department found this to be unsuitable.

“We recognise some residents may have concerns with the transport department’s guidance to use Winfarthing Road, but we are confident that our access design to the Hume Highway in consultation with the department will improve traffic safety,” Mr Serra said.

Global Quarries Australia will undertake major road works and improvements and build a new Bus Shelter on Winfarthing Road in line with TfNSW requirements.

Full details on changes to haulage vehicle routes can be found at [www.globalquarriesmarulan.com.au](http://www.globalquarriesmarulan.com.au)

Environmental reports are being finalised by expert consultants while negotiations for use of Crown Lands are progressing.

Global Quarries will continue to inform stakeholders and the community through community notices, updated website information, stakeholder briefings, a Community Consultative Committee meeting, information stalls, doorknocking, media releases and advertising.

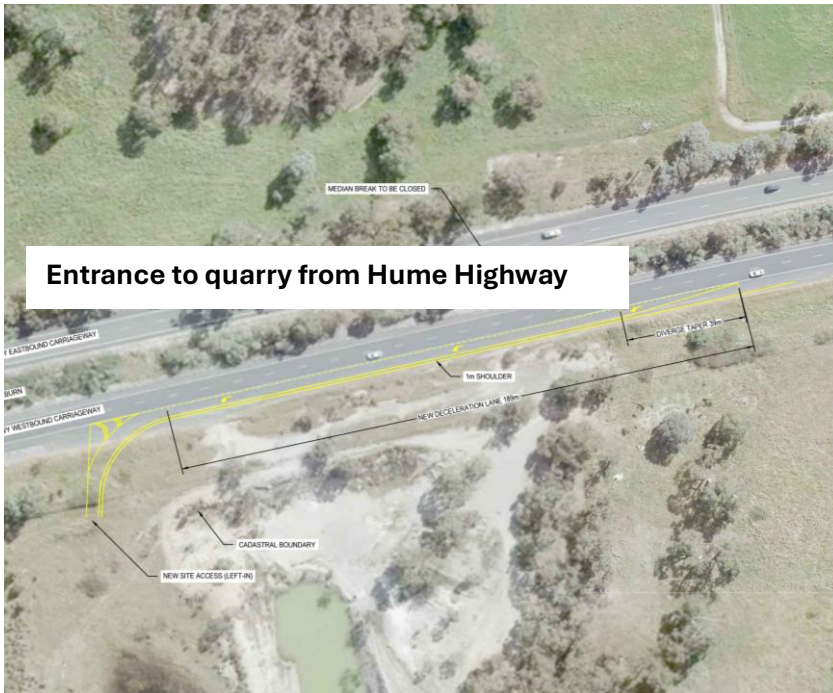
As a State Significant Development, the quarry will help meet the demands of the construction industry for roads and infrastructure projects, and housing in regional areas and wider Sydney. It will directly employ 20 people during the construction phase and once operational 10 full-time onsite staff and an additional 20 in off-site transportation. Priority will be given to indigenous employment opportunities and using local landscaping and civil contracting businesses.

**Released by:** Bill Pickering. 0404 074 299.

**More 1/-2**

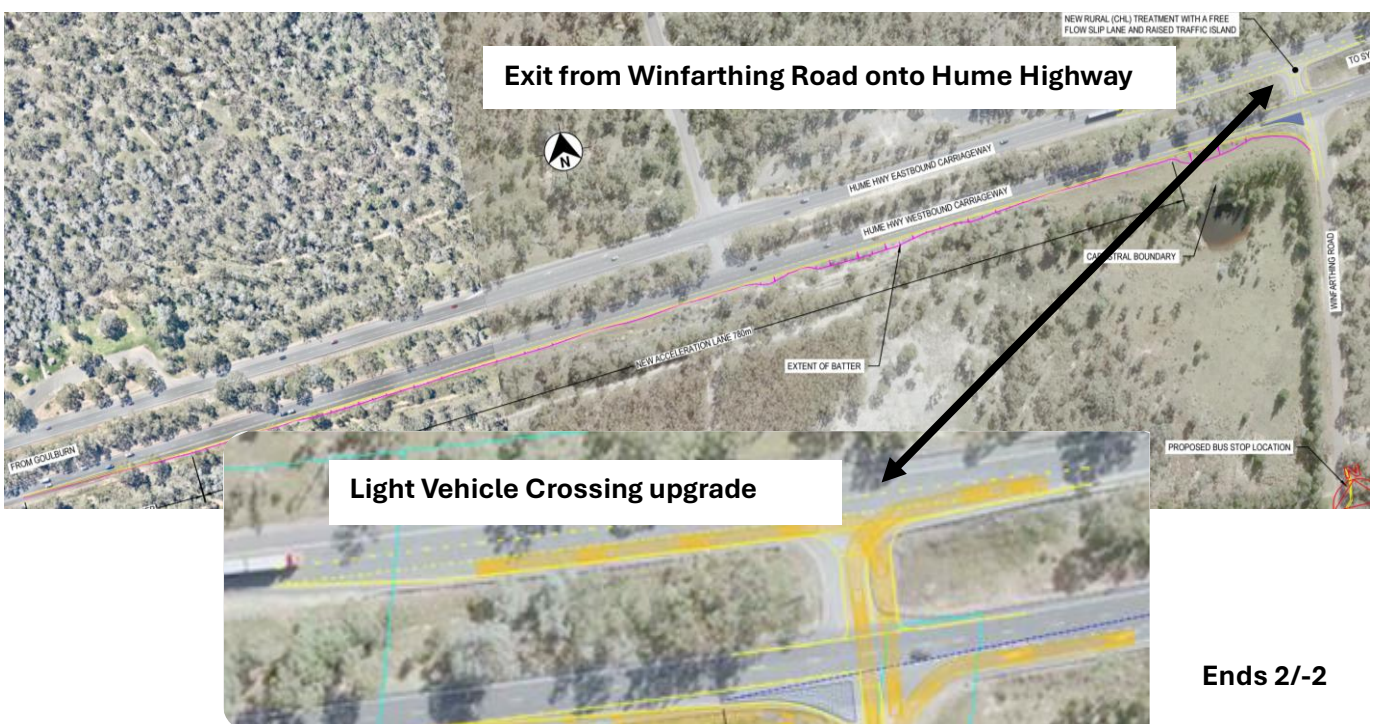
**DETAILS ON ROAD UPGRADES AND HAULAGE ROUTES ATTACHED.**

# DETAILS ON ROAD UPGRADES AND HAULAGE ROUTES



- Quarry will use a maximum of 50 trucks per day with 50 movements in and 50 movements out - 100 movements total. There are no night operations.
- A major upgrade planned to the Winfarthing Road / Hume Highway intersection towards Goulburn incorporating a new left turn with free-flow slip lane, raised traffic island, 780 metre acceleration lane and a 120-metre merge taper.
- Haulage vehicles exiting the quarry will enter Winfarthing Road and travel about 220 metres before turning left into the new south-west acceleration lane. All haulage vehicles will travel south-west before using the Goulburn South interchange for loads destined for the Sydney market.

- Only light vehicles will be able to cross Hume Highway to and from the south-western side to enter and exit Winfarthing Road. Trucks must turn left only when exiting Winfarthing Road. The Light Vehicle Crossing upgrade will include improved line markings and widening of the existing Hume Highway median crossing at Winfarthing Road.
- Haulage vehicles can only enter the quarry site coming from the Sydney-side of the Hume Highway heading towards Goulburn by turning left into a specifically designed 189-metre deceleration lane.
- Global Quarries Australia will build a new bus stop south-east of the haulage road entrance to Winfarthing Road from the quarry to reduce interaction with haulage vehicles exiting site.



Ends 2/-2